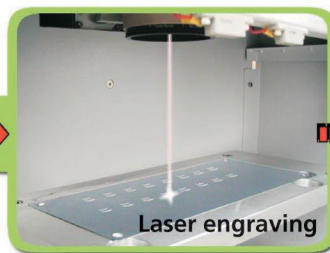


## High quality print and Eco-friendly solution for Pad Printing



- Direct computer graphic to laser engrave pad printing plate
- No positive film, no chemicals, no acid, no alcohol needed
- "Just In Time" no waiting, instant plate making
- Easy storage regardless of temperature or storage condition
- Superior resolution quality by **KENT KCTP system**
- Image resolution up to 150 lpi, 2400 dpi
- Able to engrave halftone with RIP
- Long plate life up to 50,000 prints
- Superior plate cleaning by KENT TCIC ink cup or **Green cup**
- Able to put 2 images per plate



### Cost Savings :

- Just plate cost save 30% per plate
- Able to put 2 images per plate, save another 60% per plate
- Eliminate positive films cost
- Eliminate steel plate exposing, developing and etching cost
- Save all labour and process for steel chemical etching
- Save half hour to make **Green Plate**
- Save 15 plates cost over polymer for 50,000 prints
- Total cost save up to 70% per 0.25 steel plate
- Save all environment issue from chemical etching



### Comparison Chart :

	<b>KENT Green Plate</b>	Polymer
Plate life	Over 50,000 *	5,000
Use on	Ink cup / Green cup	Ink tray
Depth control	+/- 3 μm	+/- 5 μm

### KENT Green plate sizes :

70 x 500 mm	80 x 180 mm
100 x 250 mm	150 x 300 mm
200 x 350 mm	Different sizes available

\* Plate lifetime parameter bases on objective factors (e.g. using Kent pad printer, Kent ink, normal stable ink viscosity, maintenance of good Kent ink cup ring edge width etc...). Actual lifetime may be affected by any separate printing process (various periodical printing).