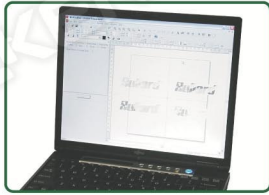
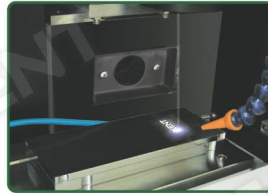


- 100% designed for Green Pad Printing

Not like hundreds of ordinary Laser Marking machine in the market, the KENT KCTP-F20S Computer - to - Plate laser engraving machine is designed to engrave Pad Printing Plates for Industrial applications.



Computer graphic



Laser engrave Green plate



Pad printing

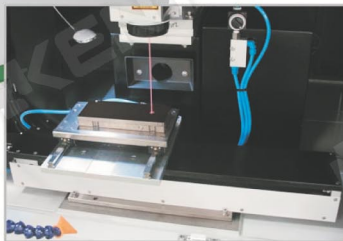
KCTP-F20S not only cut plate and processing cost by 2/3 it also increase pad printing efficiency and protect environment by eliminating : Film positives Coating emulsion Developing liquid, Cleaning agents, Corrosive etching acids and other chemicals.

FEATURES

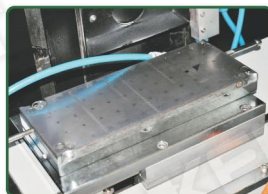
- Up to 250 lpi resolution solid prints
- 175 lpi for half-tone 4 color process images
- Long plate life up to 30,000 prints*
[*Plate life time parameter bases on objective factors (e.g. image size / mesh dots, image resolution, ink type / pigment size/density and ink cup condition)]
- Able to engrave 10 mm steel plate
- Powerful IPG 20W Fiber laser head
- Fast graphic set up, fast engraving
- Multiple images per plate, cut plate cost
- Precision "dead-on" platform in line with any KENT printer
- Handy linking to lap top computer through USB plug
- With 400 mm shuttle (Shuttle can be customised from 180-600 mm)

SPECIFICATIONS

Laser :	Fiber laser 20W
Wavelength :	1062nm
Software :	inclusive, installation for Chinese, English, German or Japanese interface
Support :	win7 (32 bit & 64 bit), win10, win11, win12
Handle files :	.ai, .dxf, .tiff, .plt, .eps...
Min. line width :	0.03 mm (0.02 mm optional)
Min. character size :	0.2 mm
Shuttle :	400 mm
Plate size :	80 x 160 mm & 100 x 250 mm (150 x 300-350 mm, 200 x 400-600 mm optional)
Data transfer:	USB 2.0
Marking area :	100 x 300 mm (Length vary with various shuttle models)
Cooling :	Air cooling system
Dimension (LxWxH) :	1,100 x 950 x 1,590 mm



- Fume extractor with professional HEPA filter



- Vacuum platform (Absolute flatness for high quality requirement)

