

**KENT**

**КСТР**

**g**



**GREEN PAD PRINTING**



## KCTP-F20

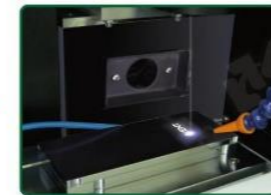
### High Precision Fiber Laser Engraving Machine

- 100% designed for Green Pad Printing

Not like hundreds of ordinary Laser Marking machine in the market, the KENT KCTP-F20 Computer - to - Plate laser engraving machine is designed to engrave Pad Printing Plates for Industrial applications.



Computer graphic

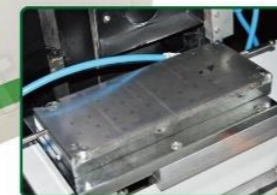


Laser engrave Green plate



Pad printing

KCTP-F20 not only cut plate and processing cost by 2/3 it also increase pad printing efficiency and protect environment by eliminating : Film positives Coating emulsion Developing liquid, Cleaning agents, Corrosive etching acids and other chemicals.



Vacuum platform  
(Absolute flatness for high quality requirement)

#### OPTIONAL



Fume extractor with professional filter

#### FEATURES

- Up to 250 lpi resolution solid prints
- 175 lpi for half-tone 4 color process images
- Long plate life up to 30,000 prints\*  
[\*Plate life time parameter bases on objective factors (e.g. image size / mesh dots, image resolution, ink type / pigment size/density and ink cup condition)]
- Able to engrave 10 mm steel plate
- Powerful IPG 20W Fiber laser head
- Eco-friendly : eliminate film positives, alcohol, acid and chemicals
- Fast graphic set up, fast engraving
- Multiple images per plate, cut plate cost
- Precision "dead-on" platform in line with any KENT printer
- Handy linking to lap top computer through USB plug

#### SPECIFICATIONS

Laser :	Fiber laser 20W (IPG)
Wavelength :	1060nm
Software :	inclusive, installation for Chinese, English, German or Japanese interface
Support :	win7 (32 bit & 64 bit), win10, win11, win12
Handle files :	.ai, .dxf, .tiff, .plt, .eps...
Min. line width :	0.02 - 0.03 mm
Min. character size :	0.2 mm
Plate size :	Standard : 100 x 250 mm Options : 80 x 160, 150 x 300, 150 x 350, 180 x 350, 200 x 400 mm
Data transfer:	USB 2.0
Marking area :	100 x 100 mm [Options: 150 x 150 mm by Big Len; 60 x 60 mm by Small Len (High resolution)]
Cooling :	Air cooling system
Dimension (LxWxH) :	800 x 950 x 1,500 mm
Weight :	218 kg



# KCTP-F20S

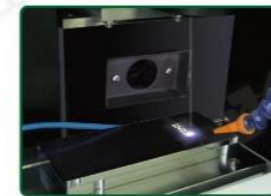
## High Precision With Servo Shuttle For Long Image Printing

- 100% designed for Green Pad Printing

Not like hundreds of ordinary Laser Marking machine in the market, the KENT KCTP-F20S Computer - to - Plate laser engraving machine is designed to engrave Pad Printing Plates for Industrial applications.



Computer graphic



Laser engrave Green plate



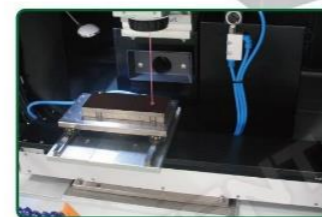
Pad printing

KCTP-F20S not only cut plate and processing cost by 2/3 it also increase pad printing efficiency and protect environment by eliminating : Film positives Coating emulsion Developing liquid, Cleaning agents, Corrosive etching acids and other chemicals.



### FEATURES

- Up to 250 lpi resolution solid prints
- 175 lpi for half-tone 4 color process images
- Long plate life up to 30,000 prints\*  
[\*Plate life time parameter bases on objective factors (e.g. image size / mesh dots, image resolution, ink type / pigment size/density and ink cup condition)]
- Able to engrave 10 mm steel plate
- Powerful IPG 20W Fiber laser head
- Fast graphic set up, fast engraving
- Multiple images per plate, cut plate cost
- Precision "dead-on" platform in line with any KENT printer
- Handy linking to lap top computer through USB plug
- With 400 mm shuttle (Shuttle can be customised from 180-600 mm)



Vacuum platform (Absolute flatness for high quality requirement)

### SPECIFICATIONS

Laser :	Fiber laser 20W (IPG)
Wavelength :	1060nm
Software :	inclusive, installation for Chinese, English, German or Japanese interface
Support :	win7 (32 bit & 64 bit), win10, win11, win12
Handle files :	.ai, .dxf, .tiff, .plt, .eps...
Min. line width :	0.02 - 0.03 mm
Min. character size :	0.2 mm
Shuttle :	400 mm (Option : 620 mm)
Plate size :	Standard : 100 x 250 mm Options : 80 x 160, 150 x 300, 150 x 350, 180 x 350, 200 x 400, 125 x 620 mm (SCMIC) (Special size on request)
Data transfer:	USB 2.0
Marking area :	100 x 300 mm (Length vary with various shuttle models)
Cooling :	Air cooling system
Dimension (LxWxH) :	800 x 950 x 1,500 mm (with 400 mm shuttle) 1,100 x 950 x 1,500 mm (with 620 mm shuttle)

### OPTIONAL



Fume extractor with professional filter



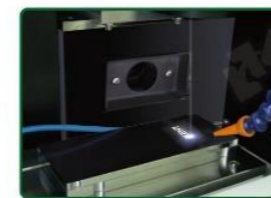
## KCTP-F30 Innovative Optic Fiber Laser Head

- 100% designed for Green Pad Printing

Not like hundreds of ordinary Laser Marking machine in the market, the KENT KCTP-F30 Computer - to - Plate laser engraving machine is designed to engrave Pad Printing Plates for Industrial applications.



Computer graphic

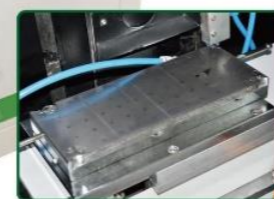


Laser engrave Green plate



Pad printing

KCTP-F30 not only cut plate and processing cost by 2/3 it also increase pad printing efficiency and protect environment by eliminating : Film positives Coating emulsion Developing liquid, Cleaning agents, Corrosive etching acids and other chemicals.



Vacuum platform  
(Absolute flatness for high quality requirement)

### FEATURES

- Up to 250 lpi resolution solid prints
- 175 lpi for half-tone 4 color process images
- Long plate life up to 30,000 prints\*  
[\*Plate life time parameter bases on objective factors (e.g. image size / mesh dots, image resolution, ink type / pigment size/density and ink cup condition)]
- Able to engrave 10 mm steel plate
- Innovative Optic Fiber laser head
- Advance control software
- Eco-friendly : eliminate film positives, alcohol, acid and chemicals
- Fast graphic set up, fast engraving
- Multiple images per plate, cut plate cost
- Precision "dead-on" platform in line with any KENT printer
- Handy linking to lap top computer through USB plug

### SPECIFICATIONS

Laser :	Fiber laser 20W (China made)
Wavelength :	1060nm
Support :	win7 (32 bit & 64 bit), win10, win11, win12
Handle files :	.ai, .dxf, .tiff, .plt, .eps...
Min. line width :	0.02 - 0.03 mm
Min. character size :	0.2 mm
Shuttle :	Optional
Plate size :	Standard : 100 x 250 mm Options : 80 x 160, 150 x 300, 150 x 350, 180 x 350, 200 x 400 mm
Data transfer:	USB 2.0
Marking area :	100 x 100 mm [Options: 150 x 150 mm by Big Len; 60 x 60 mm by Small Len (High resolution)]
Cooling :	Air cooling system
Dimension (LxWxH) :	800 x 950 x 1,500 mm
Weight :	218 kg

### OPTIONAL



Fume extractor with professional filter



# KCTP-F10

## High Precision Fiber Laser Engraving Machine

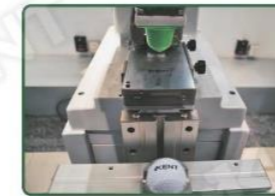
- 100% designed for Green Pad Printing



Computer graphic



Laser engrave Green plate



Pad printing



### FEATURES

- Rigid Granite Stone Platform for engraving precision
- Up to 250 lpi resolution solid prints
- 175 lpi for half-tone 4 color process images
- Long plate life up to 30,000 prints\*  
[\*Plate life time parameter bases on objective factors (e.g. image size / mesh dots, image resolution, ink type / pigment size/density and ink cup condition)]
- Powerful IPG 20W Fiber laser head
- Eco-friendly : eliminate film positives, alcohol, acid and chemicals
- Fast graphic set up, fast engraving
- Multiple images per plate, cut plate cost
- Eye protection window
- Precision "dead-on" platform in line with any KENT printer
- Handy linking to lap top computer through USB plug

### SPECIFICATIONS

Laser :	Fiber laser 20W (IPG)
Wavelength :	1060nm
Software :	inclusive, installation for Chinese, English, German or Japanese interface
Support :	win7 (32 bit & 64 bit), win10, win11
Handle files :	.ai, .dxf, .tiff, .plt, .eps...
Min. line width :	0.03 mm
Min. character size :	0.2 mm
Plate size (mm) :	Standard : 100 x 250 Options : 80 x 160 , 150 x 150 , 150 x 300 , 150 x 350
Data transfer:	USB 2.0
Engraving area :	Principal making area 100 x 100 mm (Ø80 mm with magnetic press ring)
Cooling :	Air cool
Dimension (LxWxH) :	425 x 836 x 502 mm
Weight :	70 kg

### OPTIONAL



Fume extractor with professional filter



# KCTP-F10 (Economy Version)

## Fiber Laser Engraving Machine

- 100% designed for Green Pad Printing



Computer graphic



Laser engrave Green plate



Pad printing



### FEATURES

- Up to 250 lpi resolution solid prints
- Long plate life up to 30,000 prints\*  
[\*Plate life time parameter bases on objective factors (e.g. image size / mesh dots, image resolution, ink type / pigment size/density and ink cup condition)]
- Powerful 20W Fiber laser head (China made)
- Advance control software
- Eco-friendly : eliminate film positives, alcohol, acid and chemicals
- Fast graphic set up, fast engraving
- Multiple images per plate, cut plate cost
- Eye protection window
- Precision "dead-on" platform in line with any KENT printer
- Handy linking to lap top computer through USB plug

### SPECIFICATIONS

Laser :	Fiber laser 20W (China made)
Wavelength :	1060nm
Software support :	win7 (32 bit & 64 bit), win10, win11
Handle files :	.ai, .dxf
Min. line width :	0.03 mm
Min. character size :	0.2 mm
Plate size :	Standard : 100 x 250 mm Options : 80 x 160 mm
Data transfer:	USB 2.0
Engraving area :	Principal making area 100 x 100 mm (Ø80 mm with magnetic press ring)
Cooling :	Air cool
Dimension (LxWxH) :	800 x 480 x 690 mm
Weight :	100 kg

### OPTIONAL



Fume extractor with professional filter

# New Era for Green Pad Printing

## Computer - to - Plate by Laser engraving



- Cut plate and production cost up to 80%
- Cut plate making labour and time
- No film, developer, emulsion, etching acid and chemicals
- Less process, less labour
- Less worker insurance compensation

- 10 times longer than polymer plate life
- Just-in-time plate making
- 100% free pollution concept, less wastage, less CO2 emission
- Safer and healthier work environment

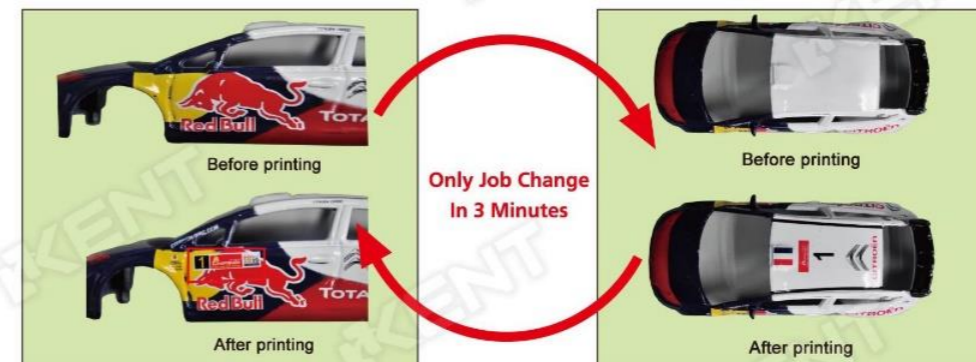
### For fast job change from graphic to final print



More efficient and environmental friendly **Green Printer**

### Fast job turn around

- With unique KENT Dead-on Quick Job Change System



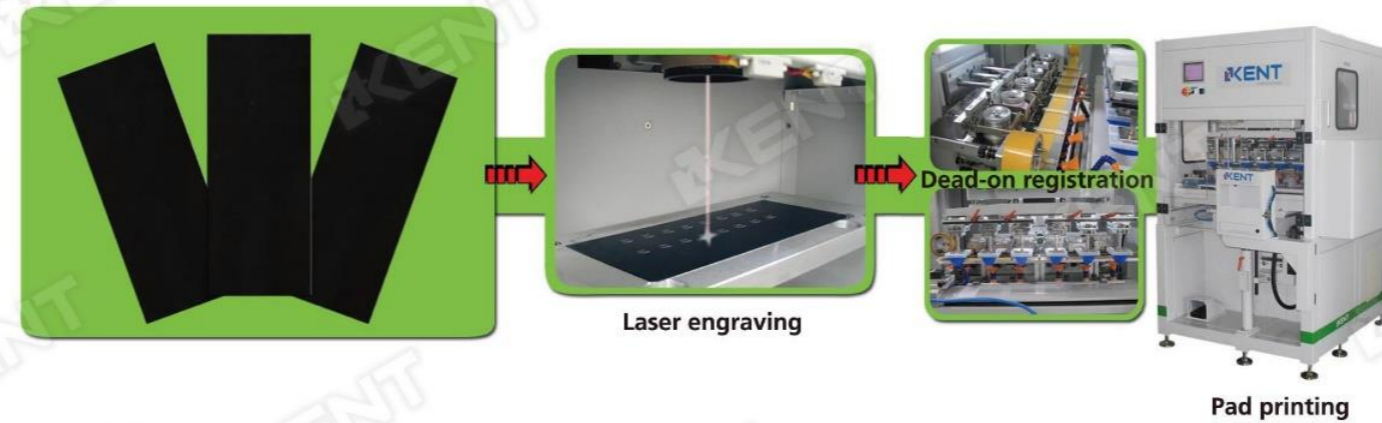
- No skill technician needed
- No machine adjustment
- Accurate
- Simplify process



## Green Plate (MGP) (Laser engraved printing plate)

### High quality print and Eco-friendly solution for Pad Printing

- Direct computer graphic to laser engrave pad printing plate
- No positive film, no chemicals, no acid, no alcohol needed
- "Just In Time" no waiting, instant plate making
- Easy storage regardless of temperature or storage condition
- Superior resolution quality by KCTP-F20 / F10
- Image resolution up to 175 lpi
- Able to engrave halftone with RIP
- Long plate life up to 30,000\* prints
- Superior plate cleaning by KENT TCIC ink cup or Green cup
- Able to put 2 images per plate



#### Cost Savings :

- Able to put 2 images per plate, save another 60% per plate
- Eliminate positive films cost
- Eliminate steel plate exposing, developing and etching cost
- Save all labour and process for steel chemical etching
- Save half hour to make MGP
- Save all environment issue from chemical etching



#### Comparison Chart :

	KENT MGP	Polymer	KENT MGP sizes :	
Plate life	Up to 30,000 *	5,000	70 x 500 mm	80 x 180 mm
Depth control	+/- 3 µm	+/- 5 µm	100 x 250 mm	150 x 300 mm
			200 x 350 mm	Different sizes available

\* Plate lifetime parameter bases on objective factors (e.g. Image size / mesh dots, image resolution, ink type / pigment size / density).



## Green Plate (MGP) Vs

### Thin Steel Plate / 10 mm Steel Plate / Polymer Plate

#### Process and Analysis :

	KENT MGP	Thin Steel Plate	10mm Steel Plate	Polymer Plate
Life time *	Up to 30,000	50,000 - 80,000	500,000	2,000
Film positive	NO	YES	YES	YES
Emulsion coating	NO	YES	YES	YES
Exposure process	NO	YES	YES	YES
Developing process	NO	YES	YES	YES
Etching process	NO	YES	YES	NO
Chemical cost	Scrub wash cream	- Film positive - Developer - Emulsion - Etching acid		Film positive, water / alcohol
Baking	NO	✓		60°C 30 minutes

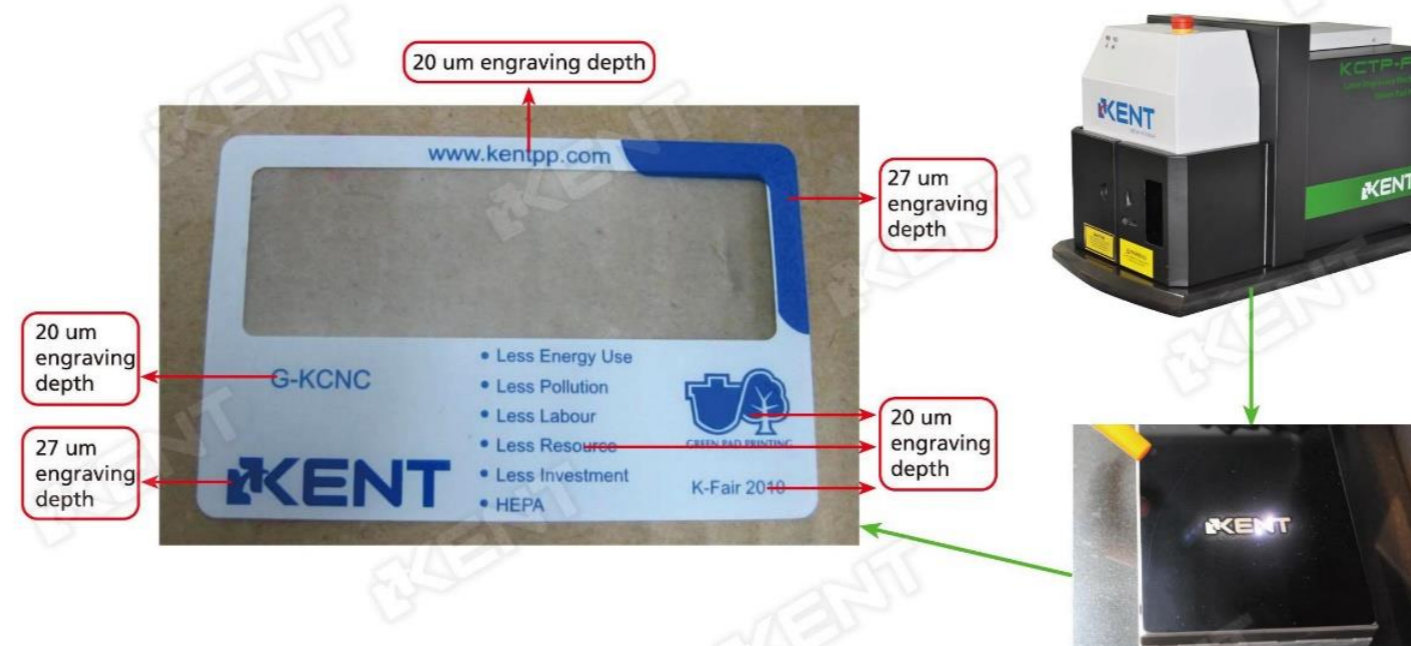
\* Plate life time parameter bases on objective factors (e.g. image size / mesh dots, image resolution, ink type / pigment size/density and ink cup condition)

#### ENGRAVING DEPTH : 14 to 30 micron (variable)



#### Multi-images engraving

Allow different image depth on same plate for 1 short print instead of multi-print steps.



[www.kentpp.com](http://www.kentpp.com)

**KENT ENGINEERING CO. LTD.**

Blk. 2, 4/F., Wah Sing Ind. Bldg., 12-14 Wah Sing St., Kwai Chung, N.T. Hong Kong.  
Tel. : (852) 2424 1899 Fax : (852) 2480 4197 Email : info@kent.com.hk

**KENT ENGINEERING (GAO YAO) CO. LTD.**

(Zhaoqing) Tel : (86) 0758-8512 888 Email : kentgy@kentchina.com  
(Dongguan) Tel : (86) 0769-8777 2010 Email : kentsg@kentchina.com  
(Tianjin) Tel : (86) 022-2795 8926 Email : kenttj@kent-pp.com.cn  
(Wuxi) Tel : (86) 0510-8522 0330 Email : kentsh@kent-pp.com.cn

